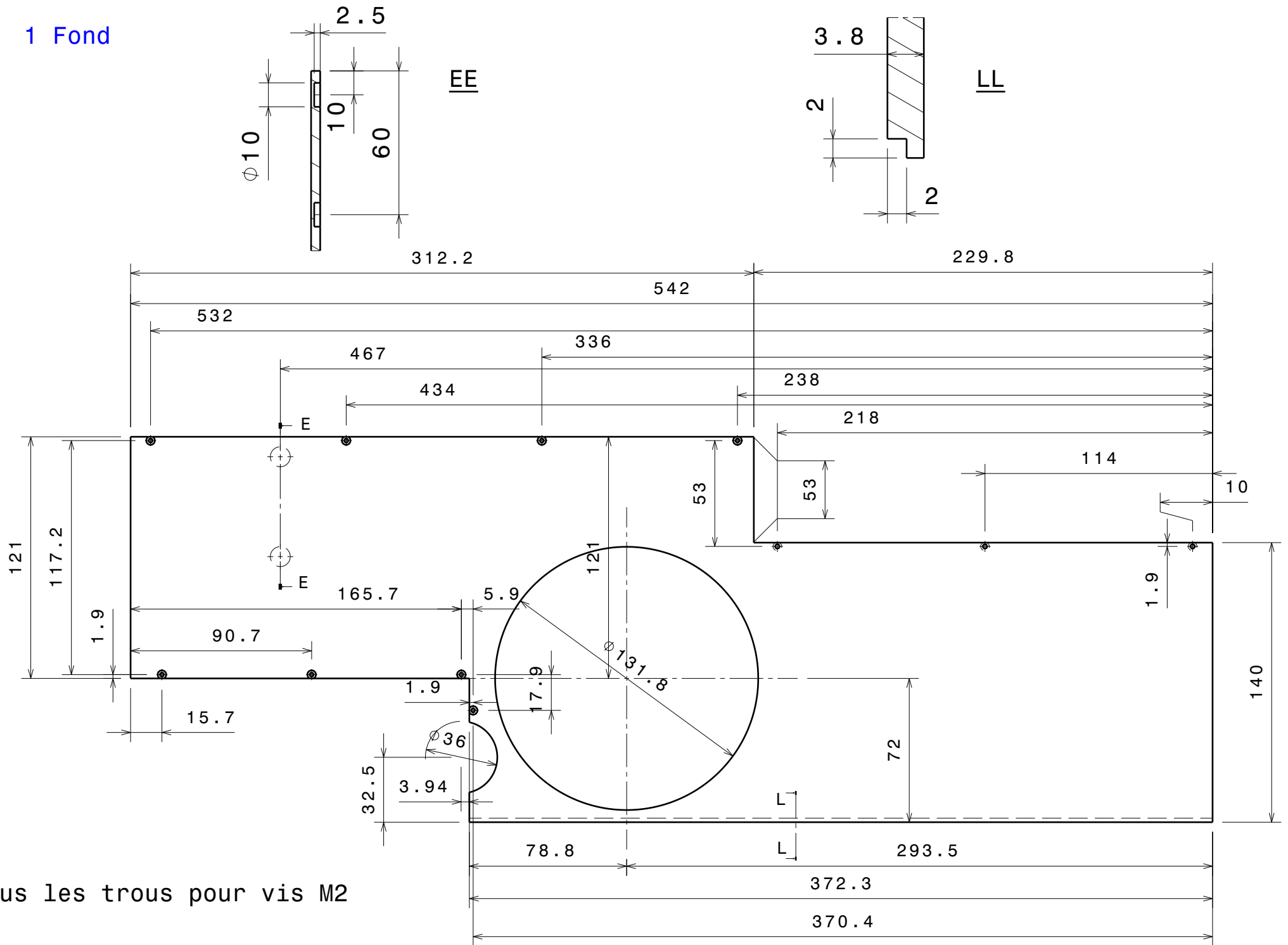


Nomenclature

N° de la pièce	Désignation	Matière
1	Fond	Perspex coulé transparent 4mm
2	Milieu Devant	"
3	Devant inf.	"
4	Derrière Milieu	"
5	Fond encodeur	"
6	Arrière	Perspex coulé transparent 2mm
7	Milieu encodeur	Perspex coulé transparent 4mm
8	Equerre	Perspex coulé transparent 6mm
9	Milieu milieu	Perspex coulé transparent 4mm
10	Recoin gauche	"
11	Devant gauche	Perspex coulé transparent 2mm
12	Milieu vertical	Perspex coulé transparent 4mm
13	Gauche	Perspex coulé transparent 2mm
14	Droit	"
15	Devant droit	"
16	Bouton dichroïque	PMMA Ø 40
17	Rail et guide	Perspex coulé transparent 2 et 8mm
17.1	Film pour rail	Feuille laser printer e = 0.1 mm
18	Tube	Plaques collées de Perspex coulé transparent 6mm
19	Fond avant	Perspex coulé transparent 4mm
20	Derrière droit	"
21	Coté encodeur	Perspex coulé transparent 2mm
22	Dessous encodeur	Perspex coulé transparent 4mm

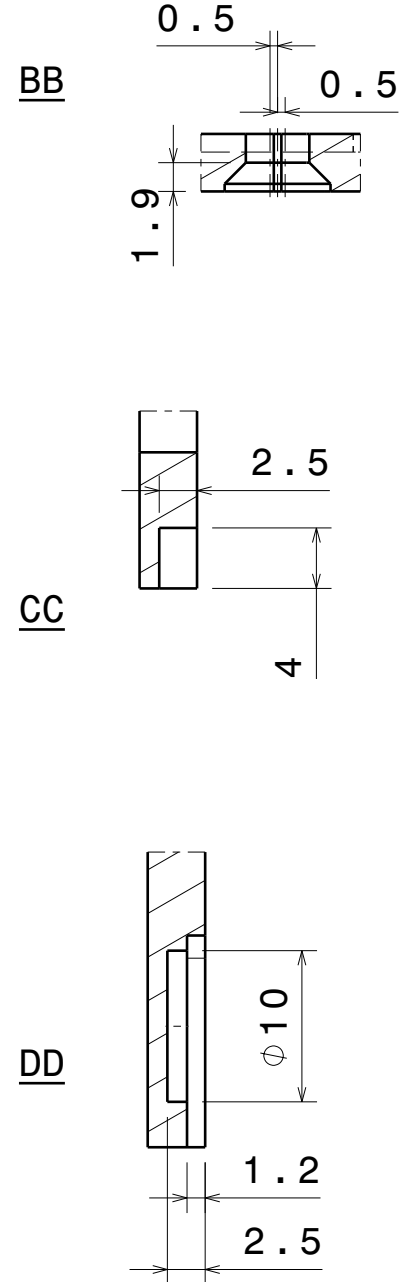
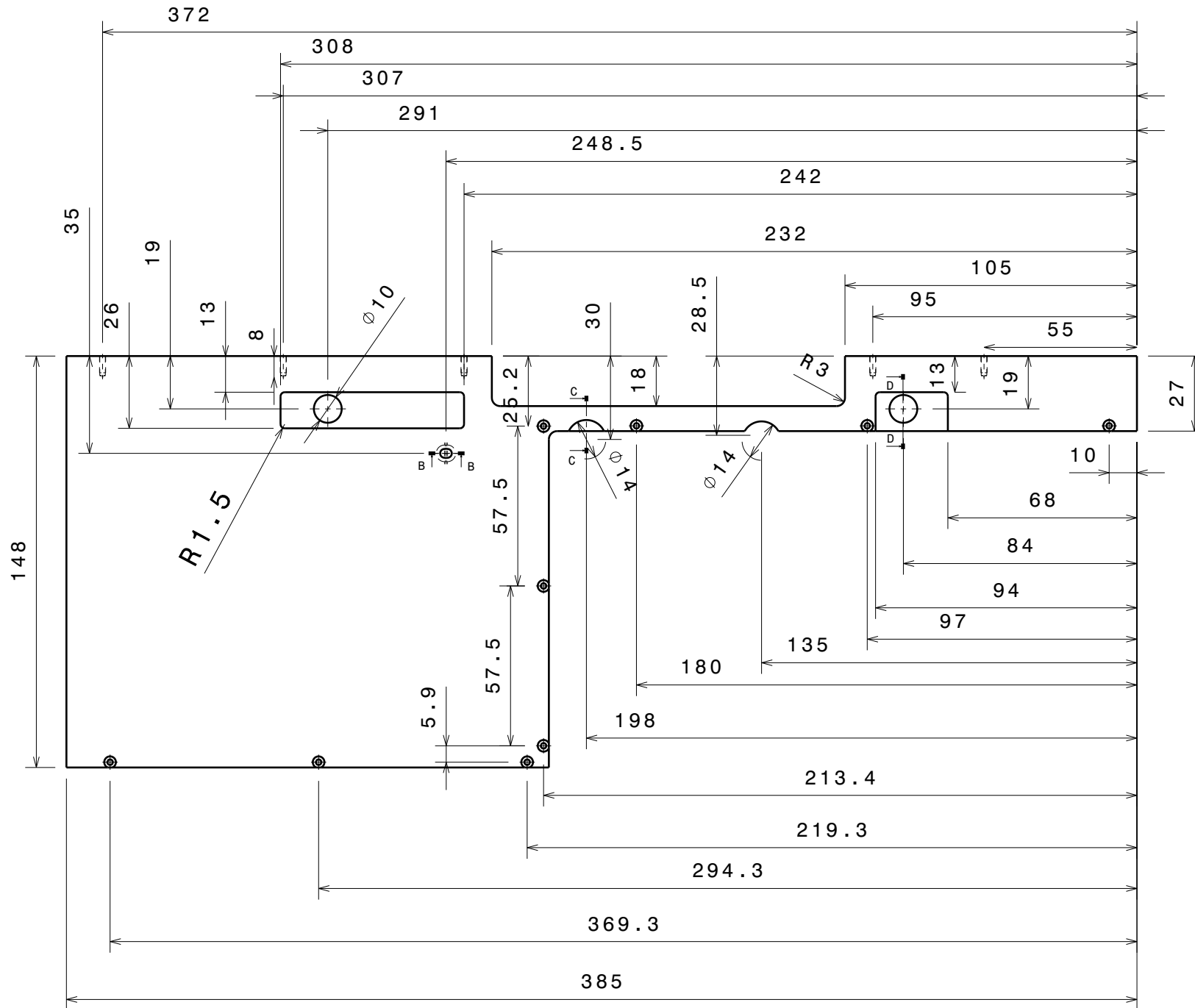
1 Fond



Tous les trous pour vis M2

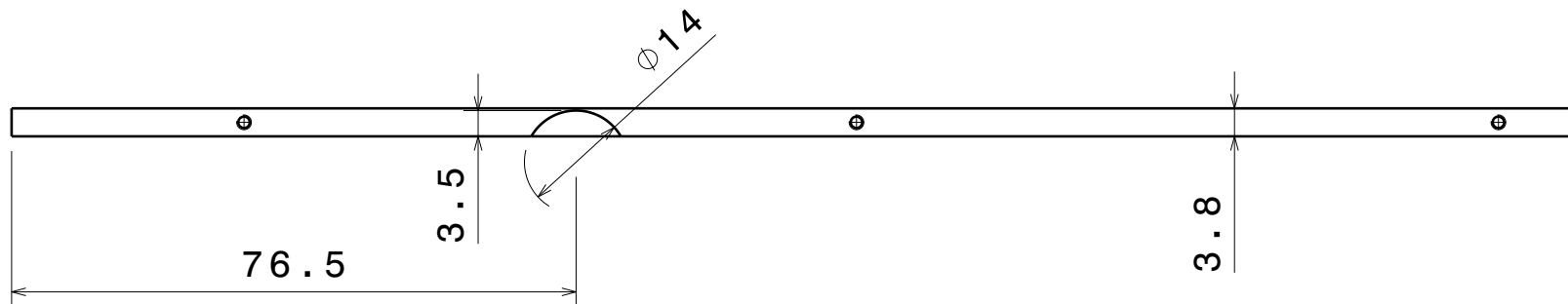
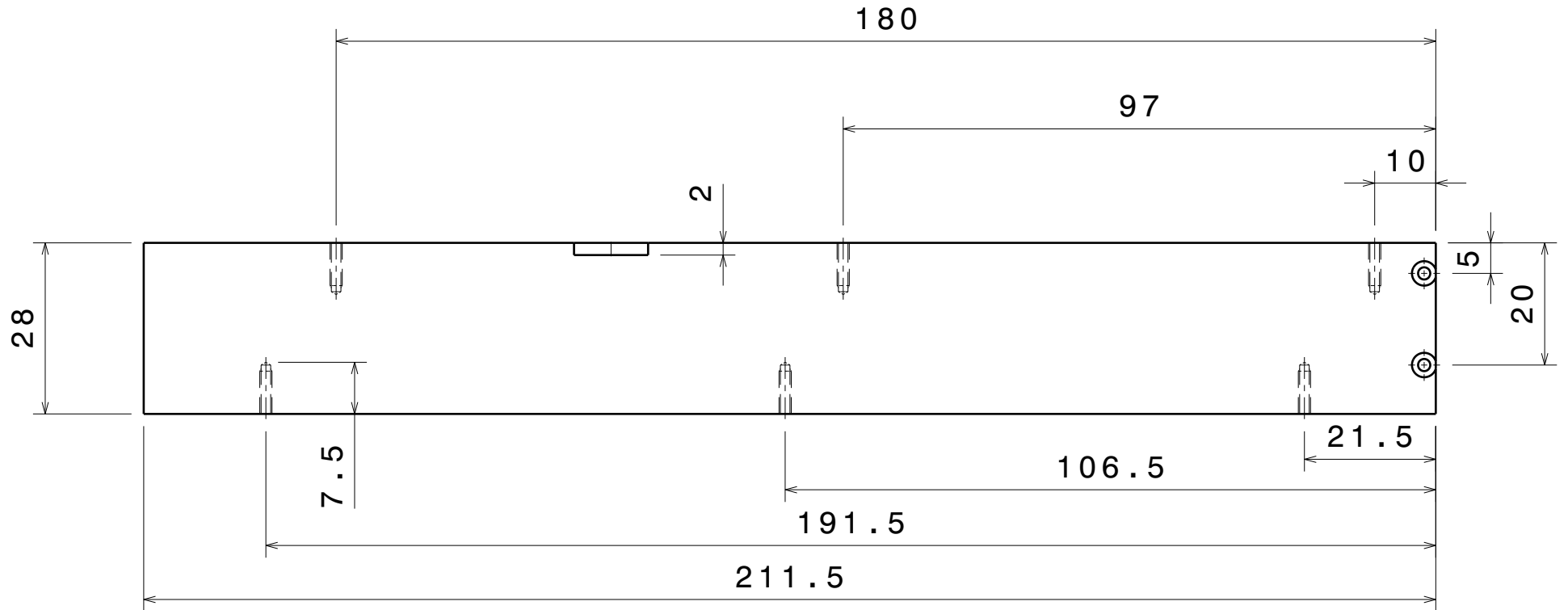
2 Milieu Devant

Tous les trous pour vis M2 sauf BB pour vis M3



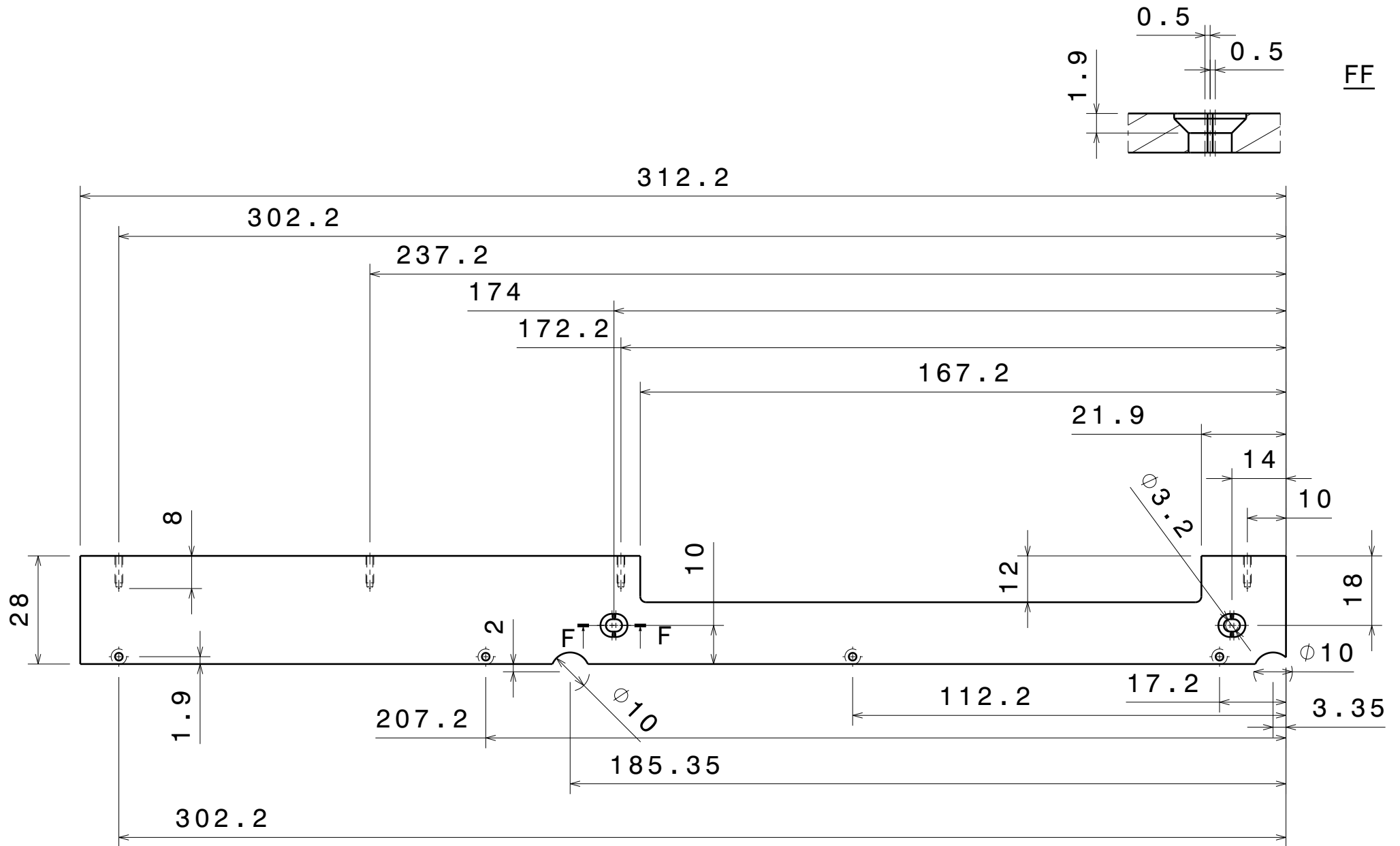
3 Devant inf

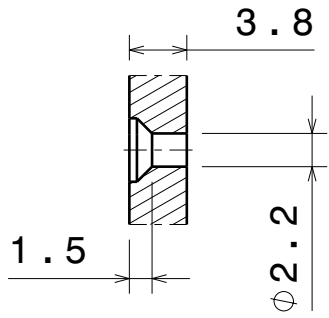
Tous les trous pour vis M2



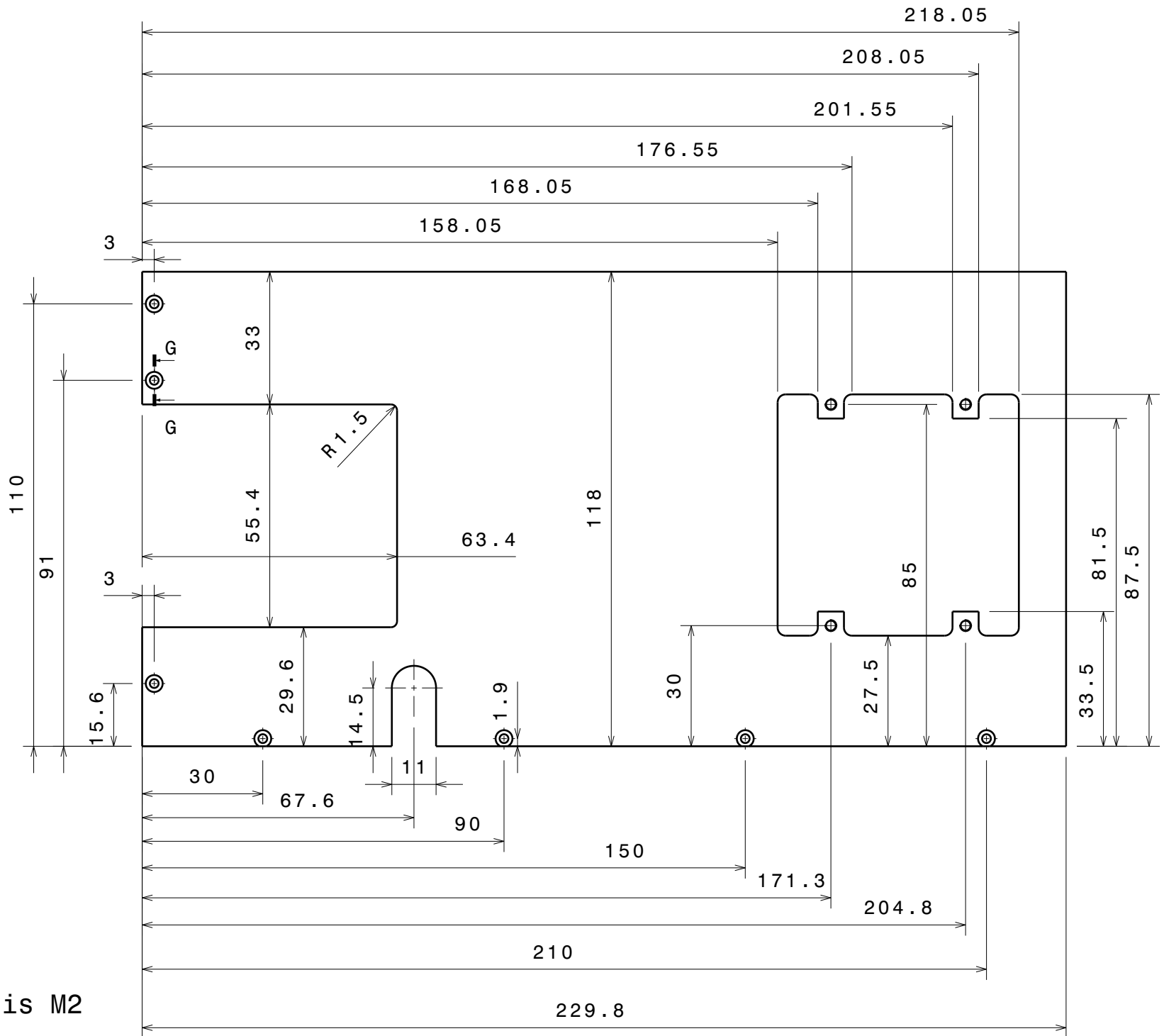
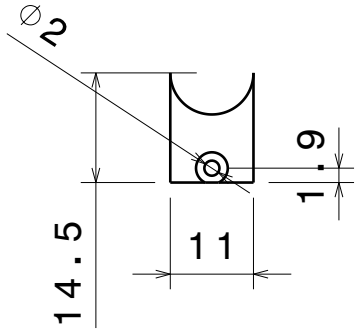
Tous les trous pour vis M2 sauf FF pour vis M3

4 Derrière milieu

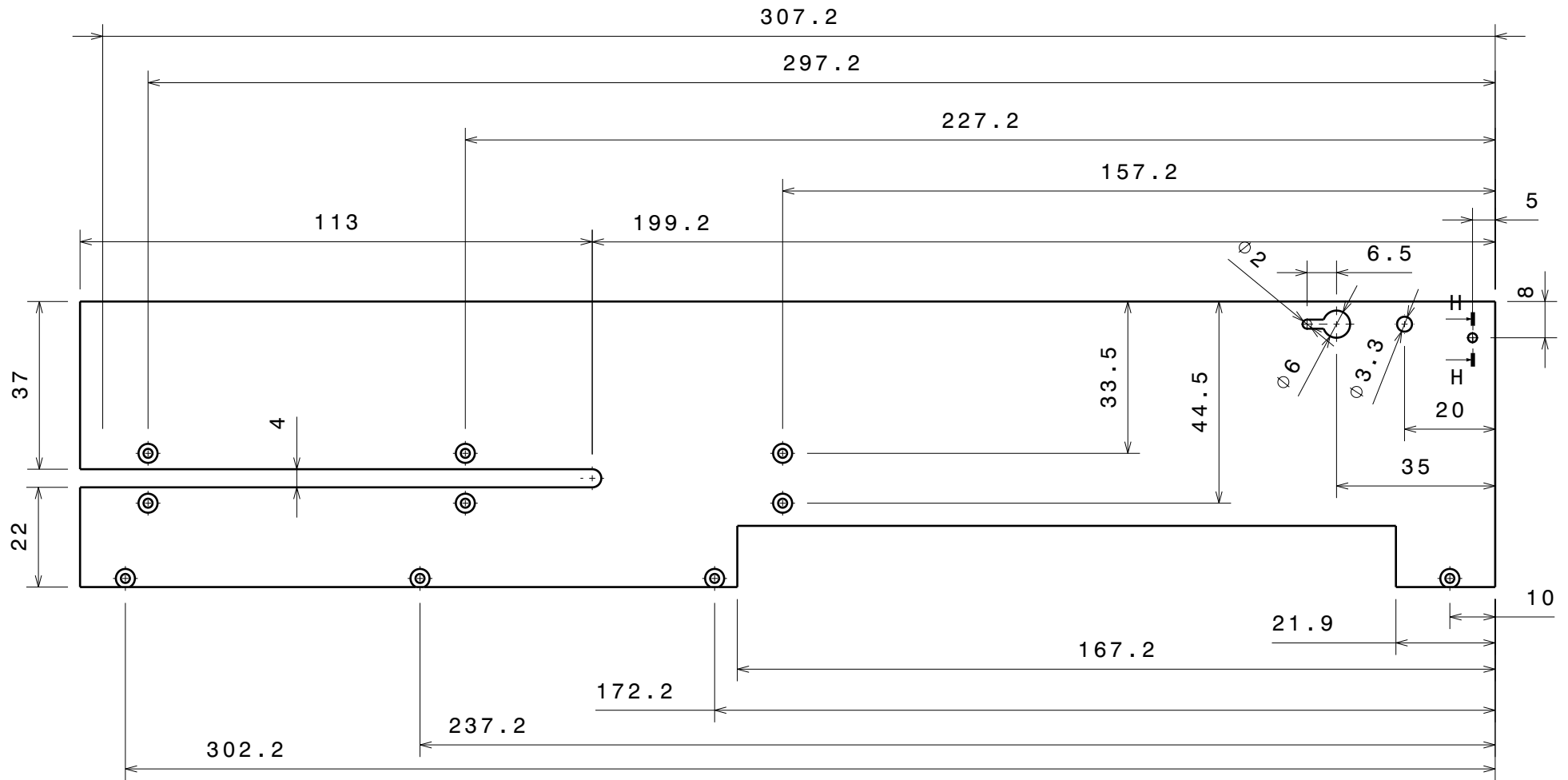




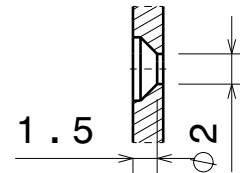
5 Fond encodeur



Tous les trous pour vis M2

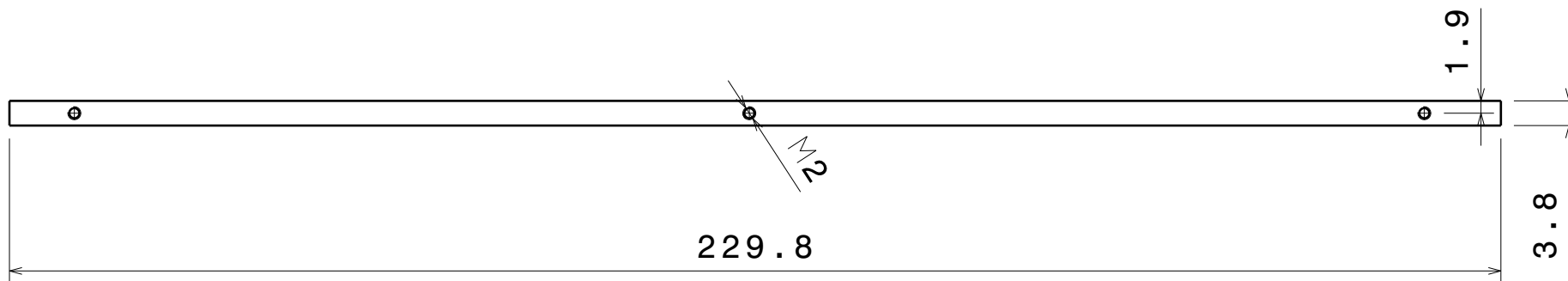
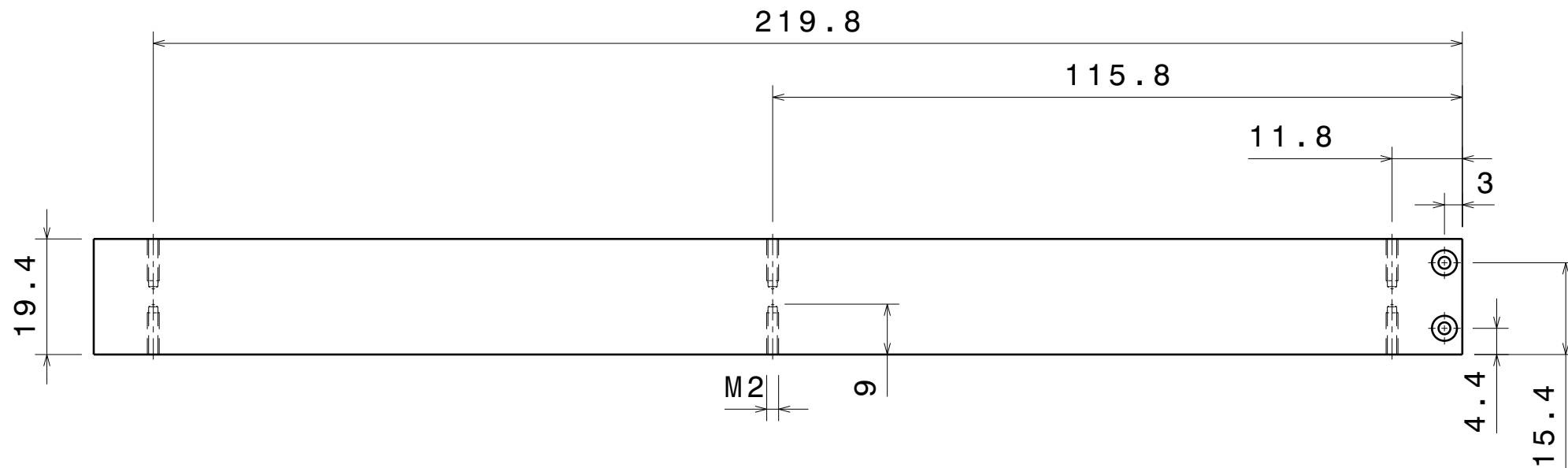


6 Arrière

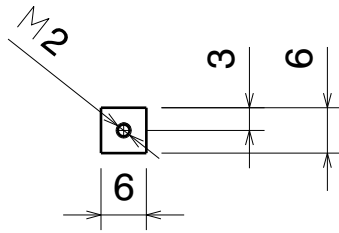


Tous les trous pour vis M2

7 Milieu encodeur

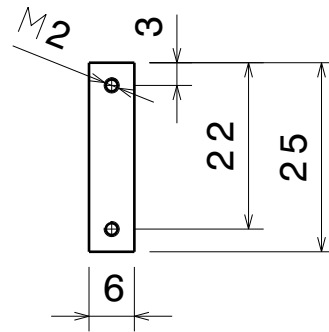


Quantité: 16

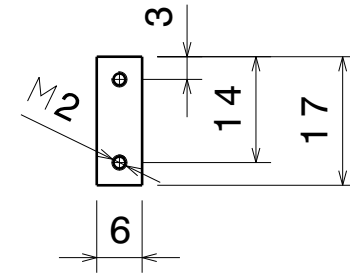


Carré de 6 x 6

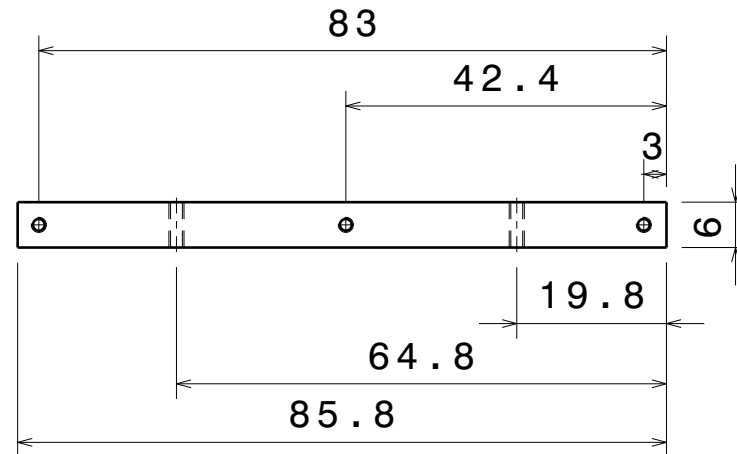
Quantité: 4



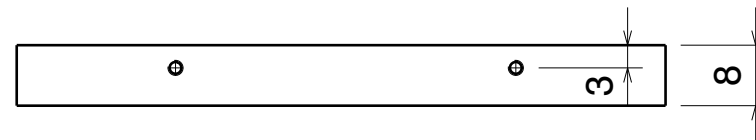
Quantité: 1



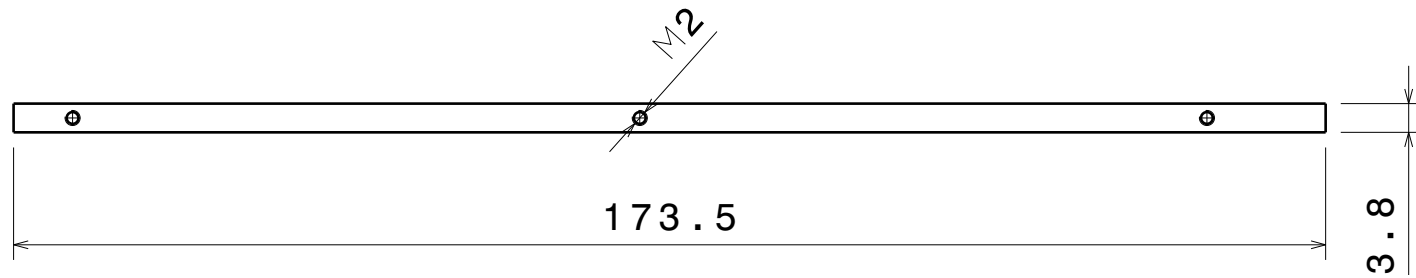
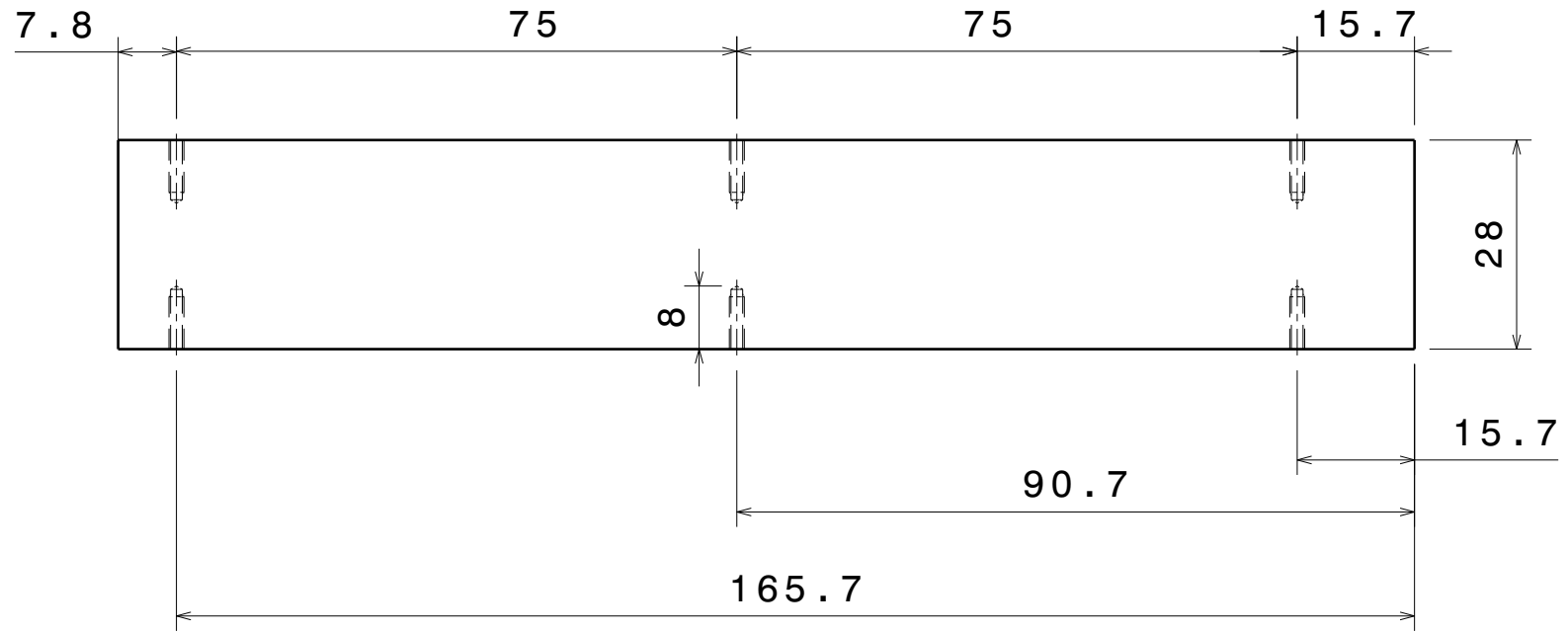
8 Equerre



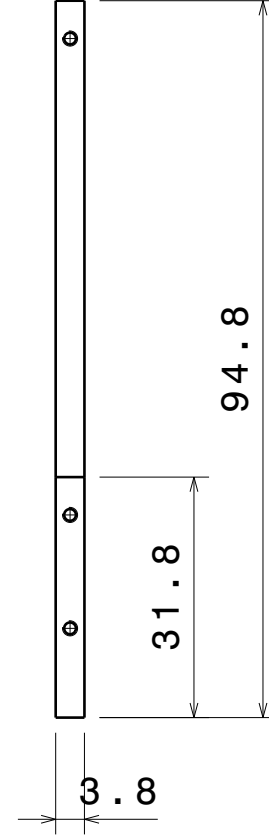
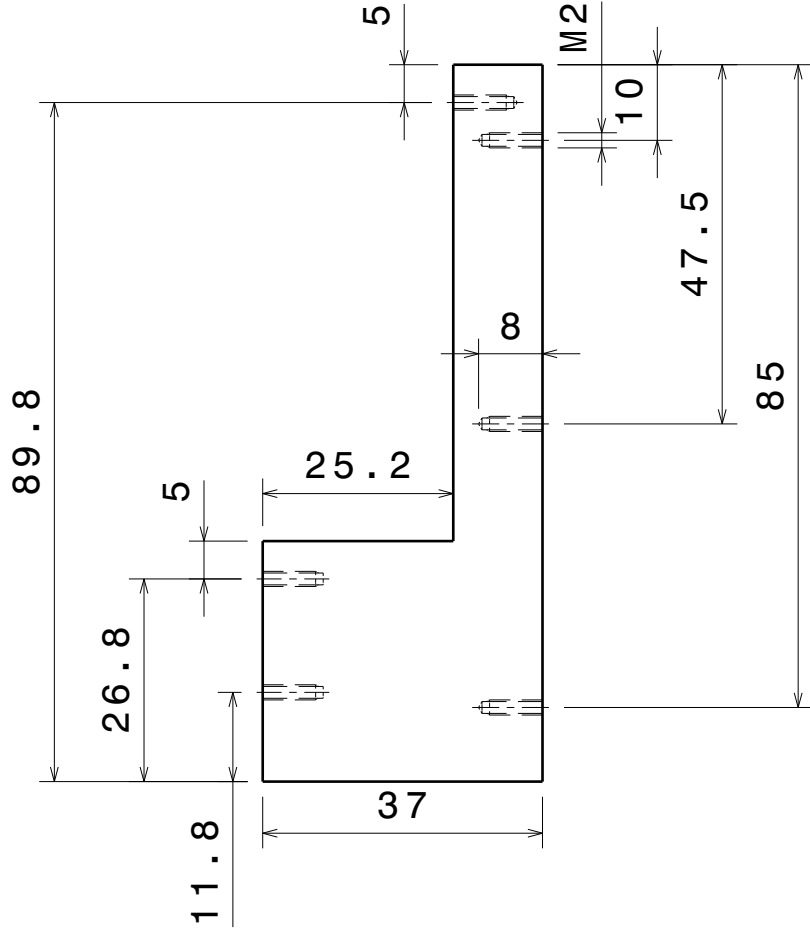
Quantité: 1



9 Milieu milieu

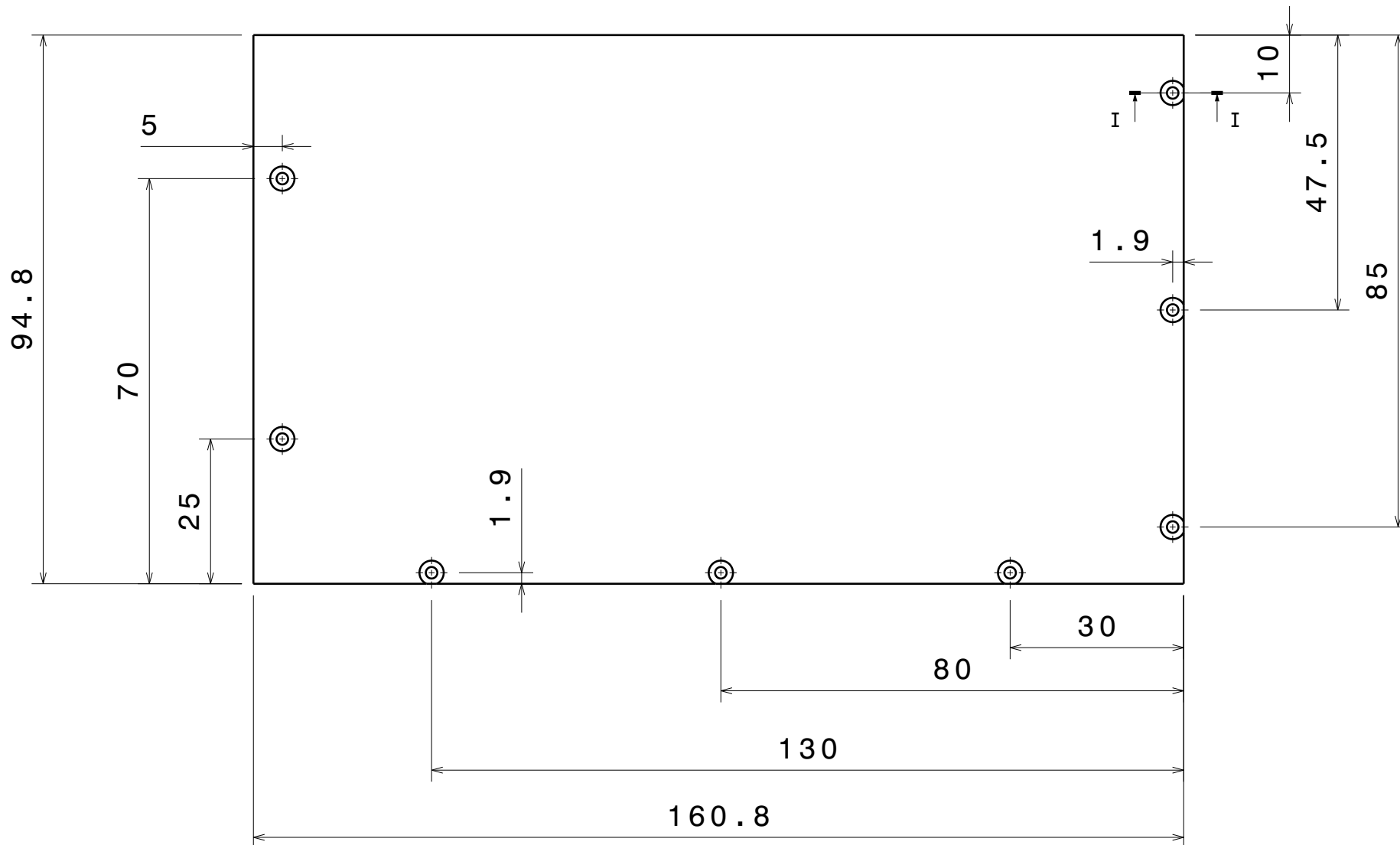
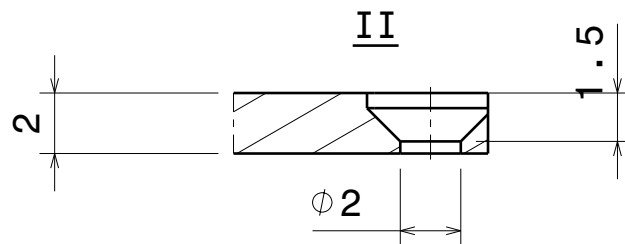


10 Requin gauche



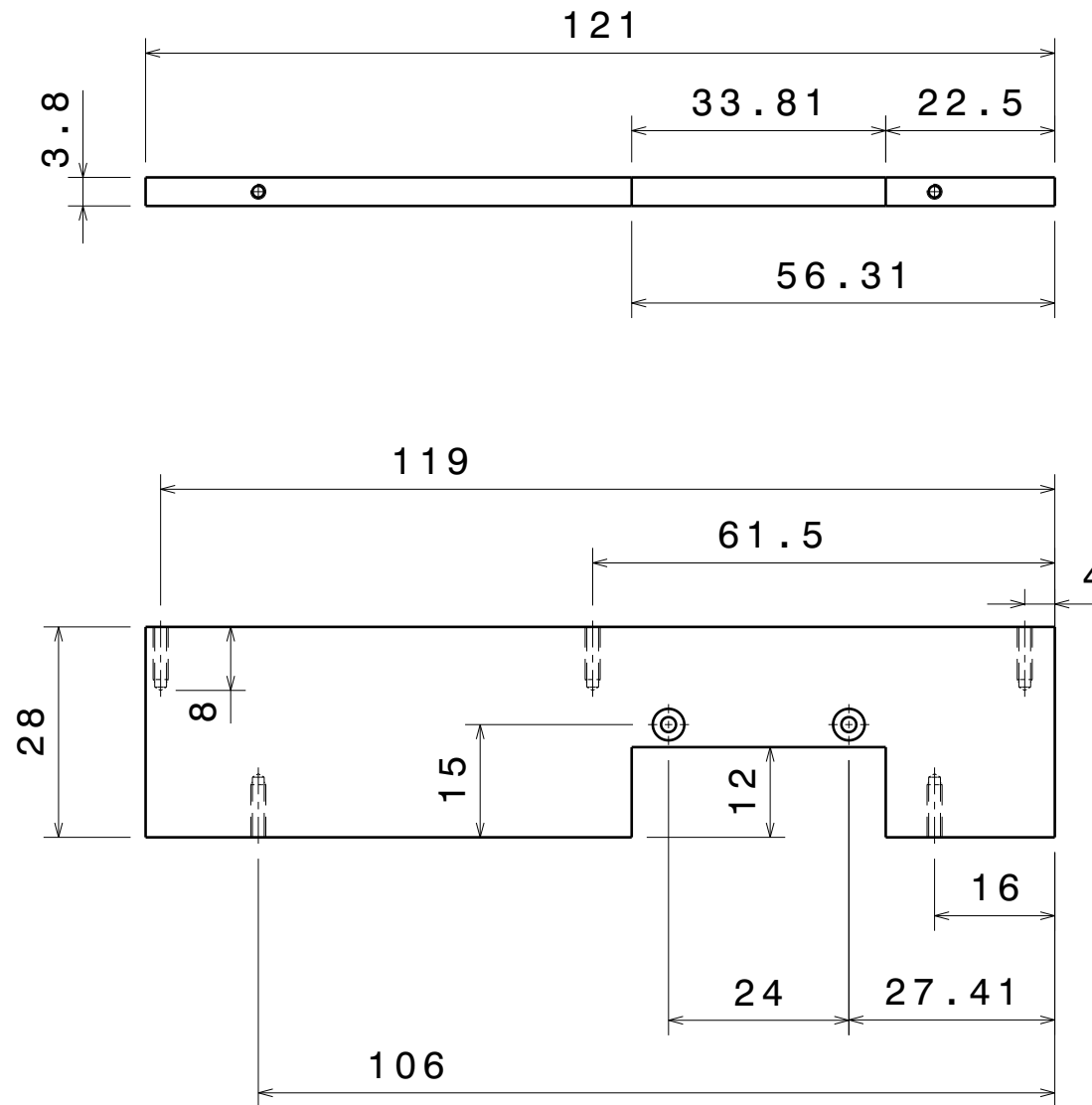
11 Devant gauche

Tous les trous pour vis M2



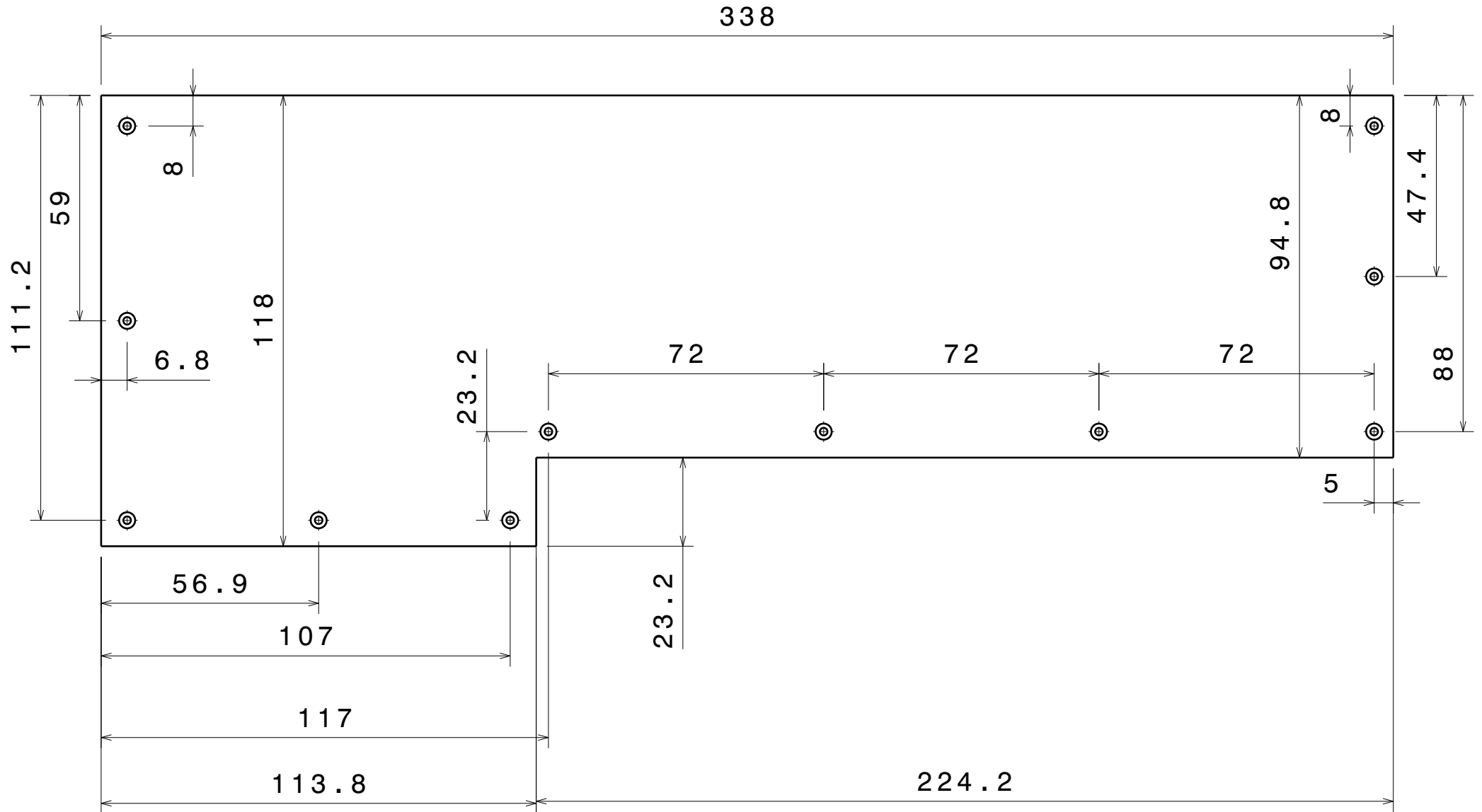
12 Milieu vertical

Tous les trous pour vis M2



13 Gauche

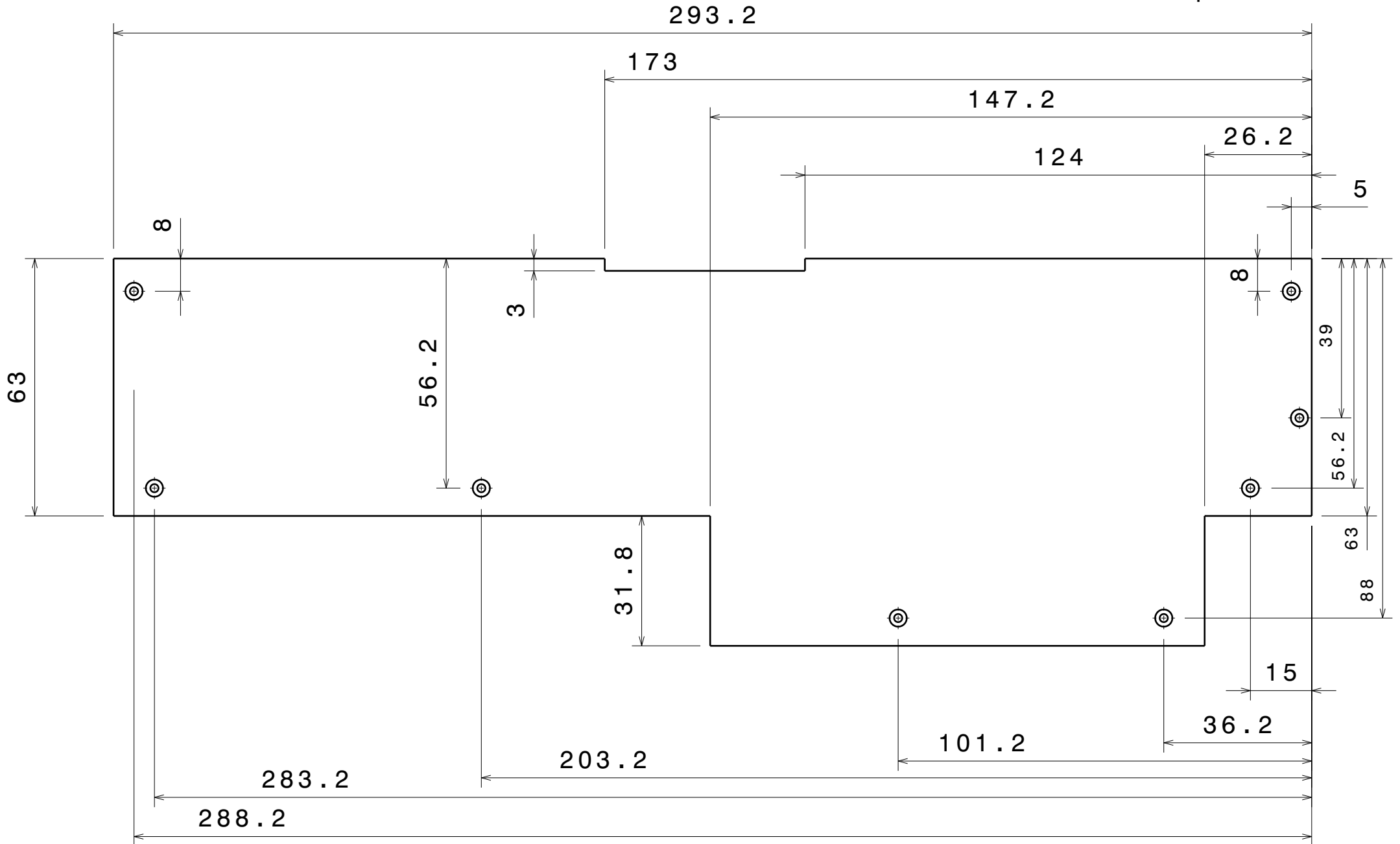
Tous les trous pour vis M2



Epaisseur 2 mm

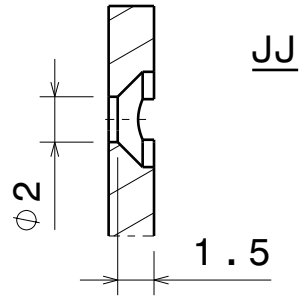
14 Droit

Tous les trous pour vis M2

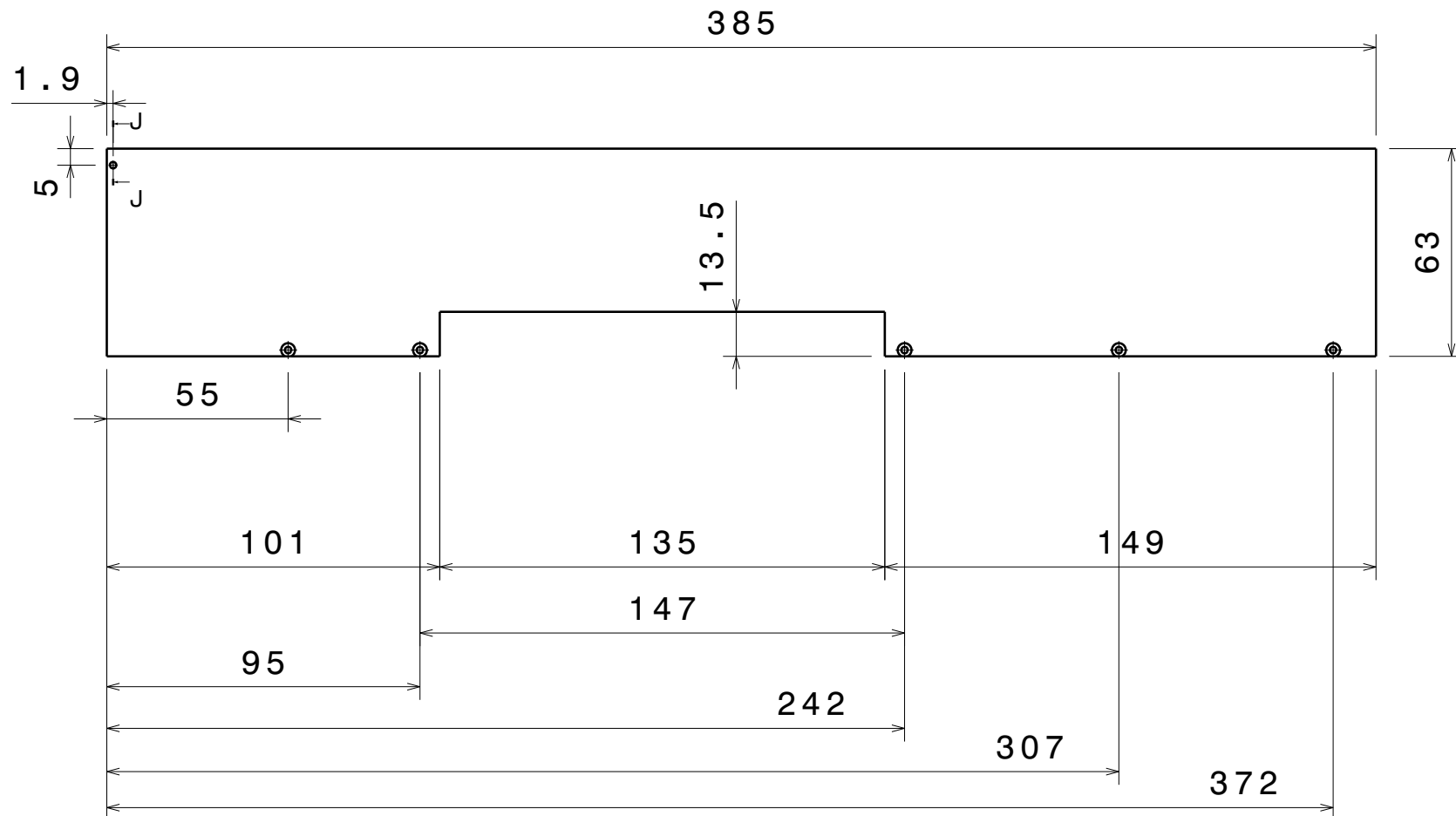


Epaisseur 2 mm

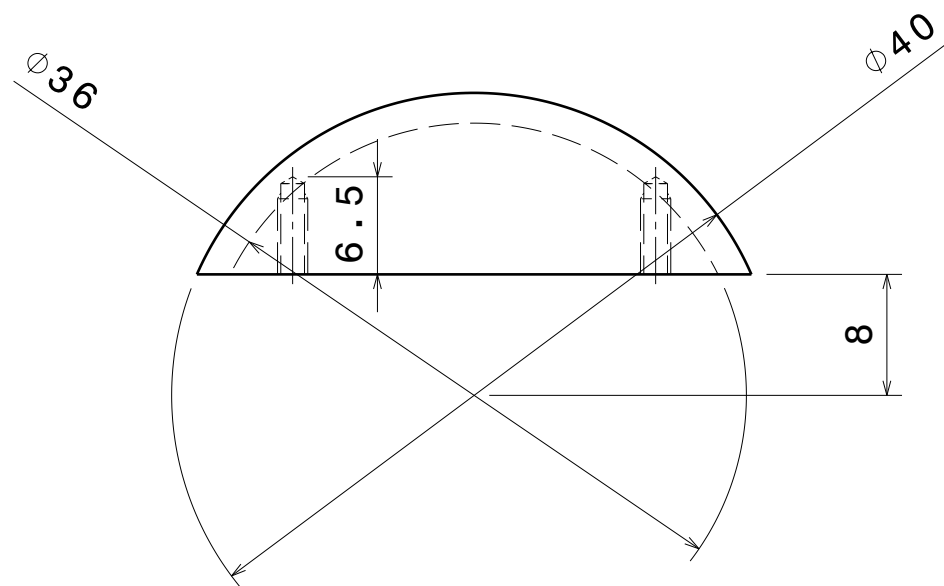
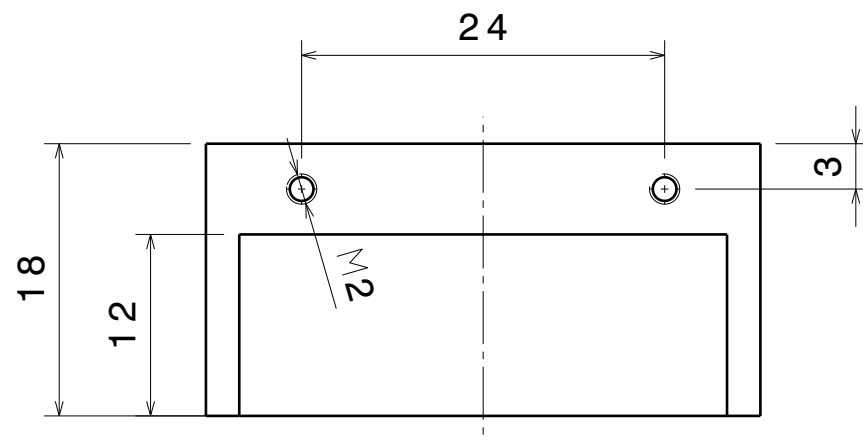
15 Devant droit

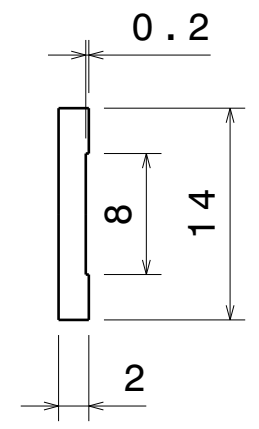
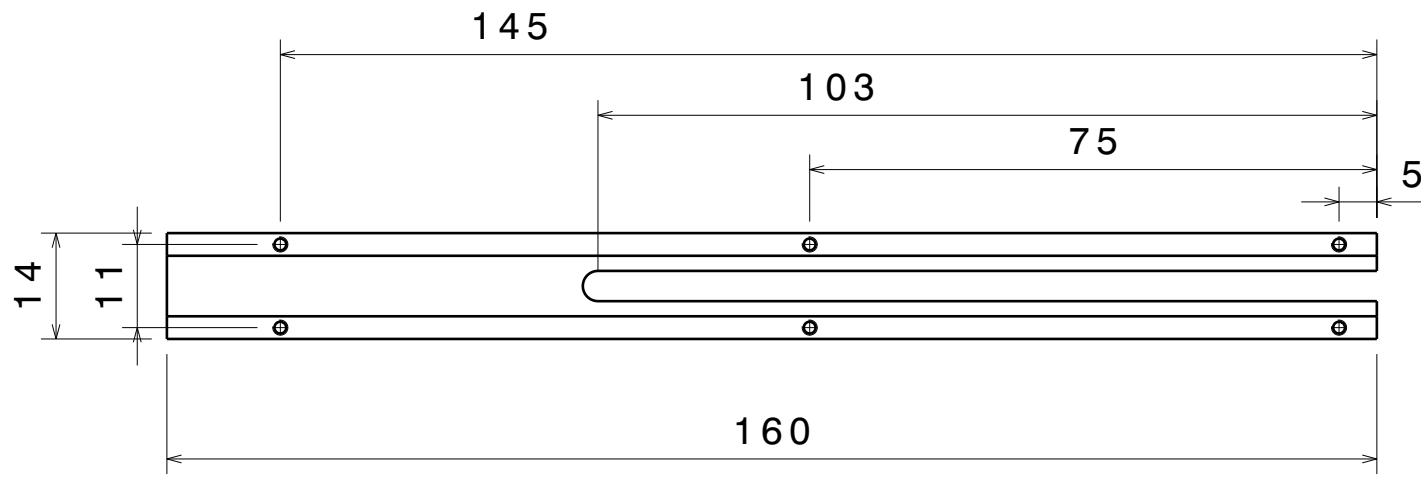


Tous les trous pour vis M2

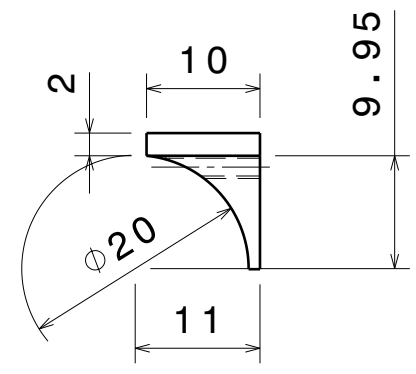
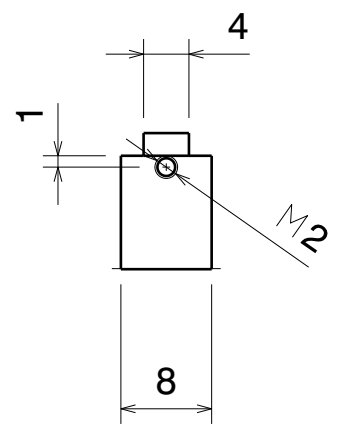


16 Bouton dichroïque

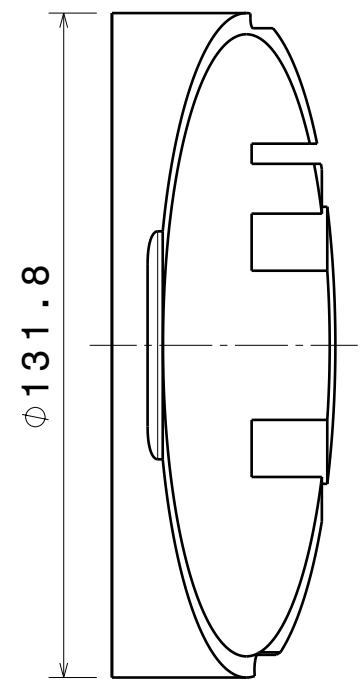
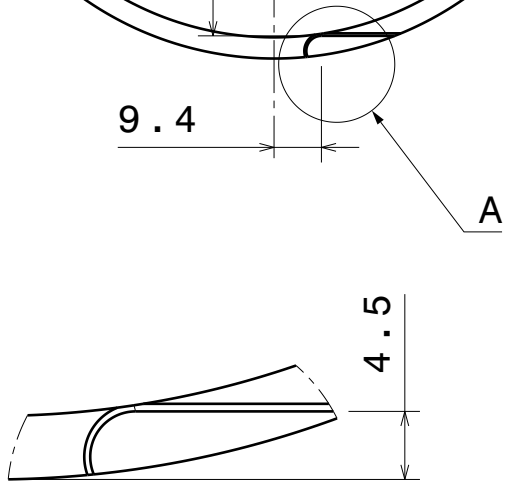
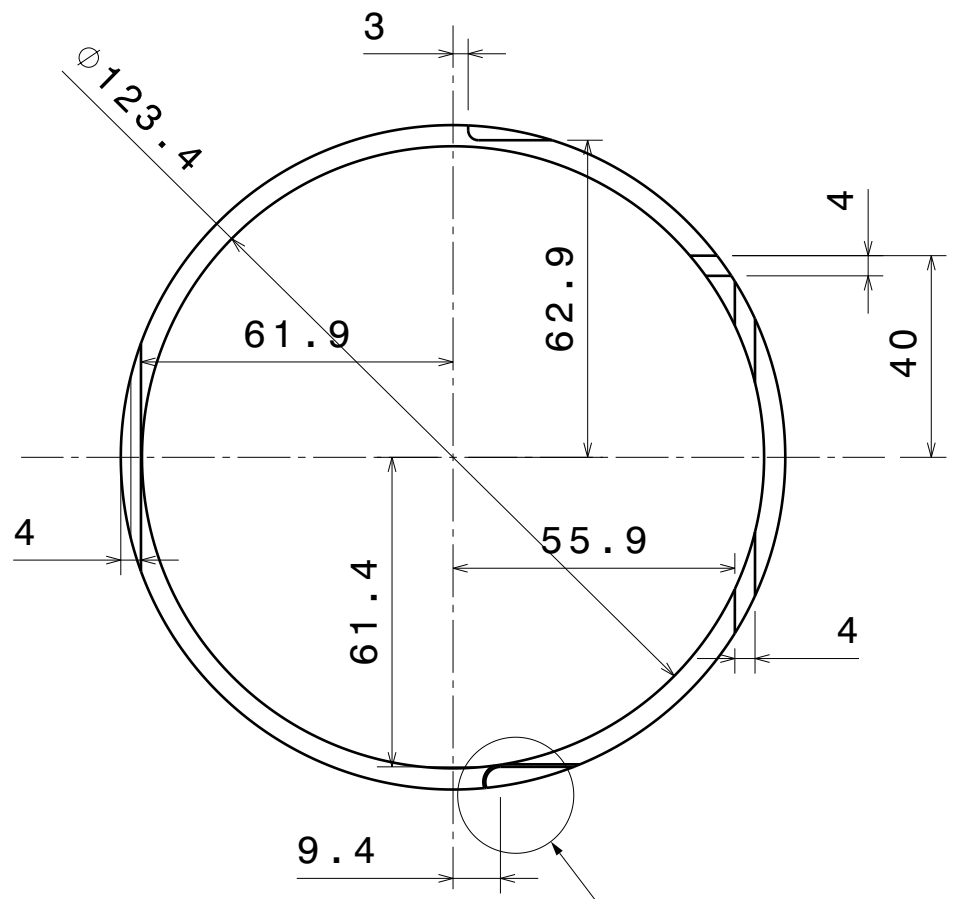




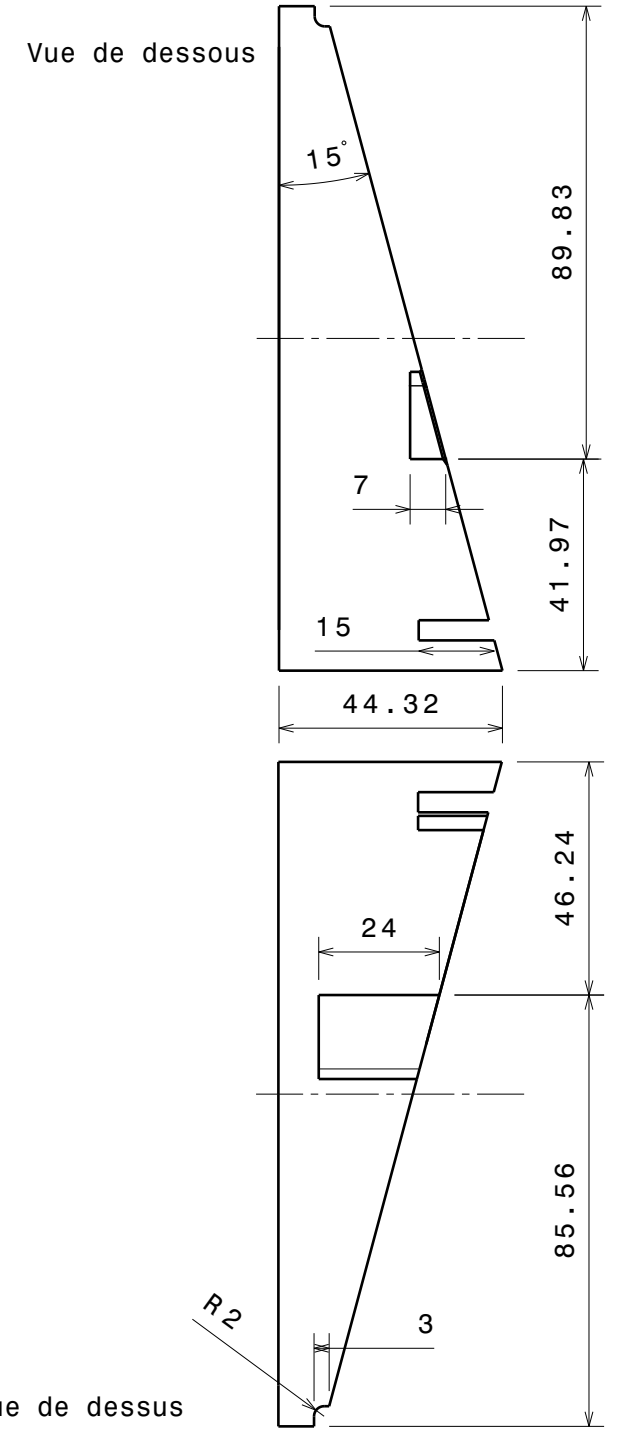
17 Rail et guide



18 Tube

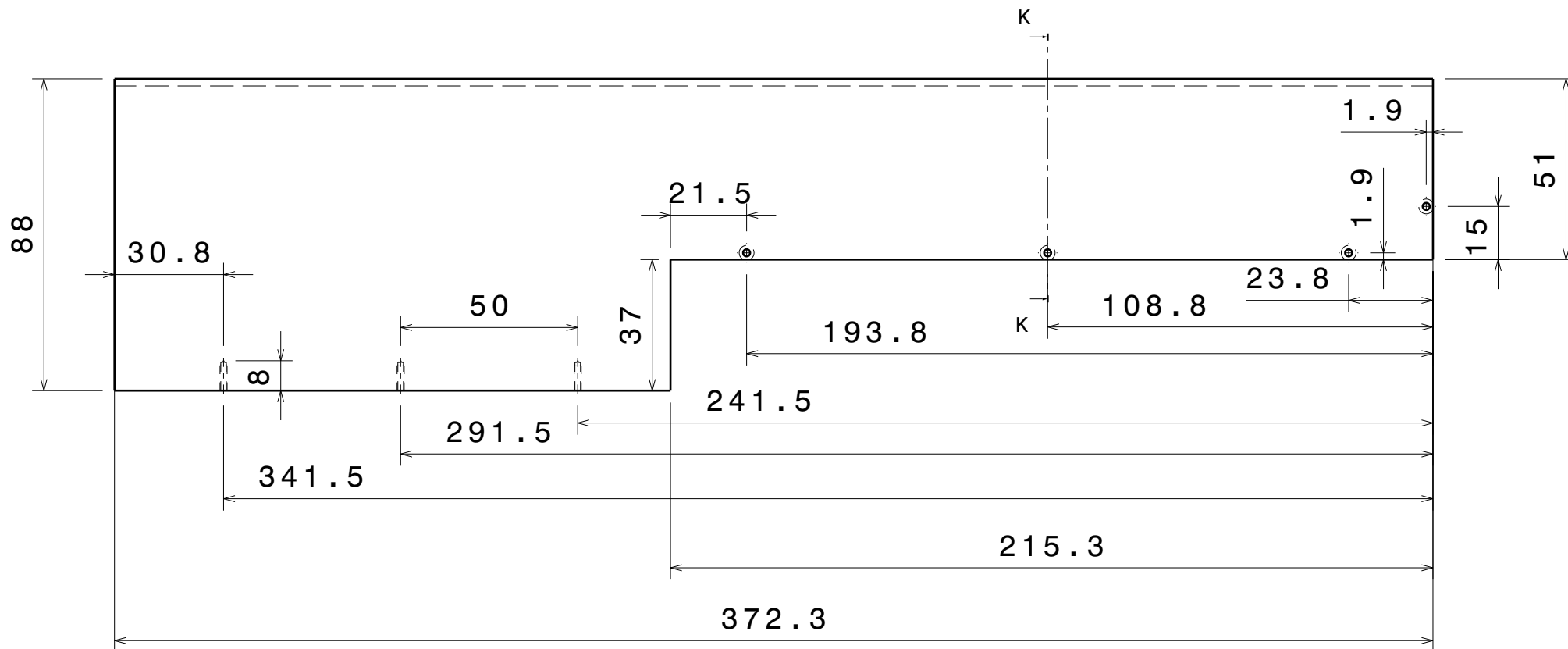


Vue de face



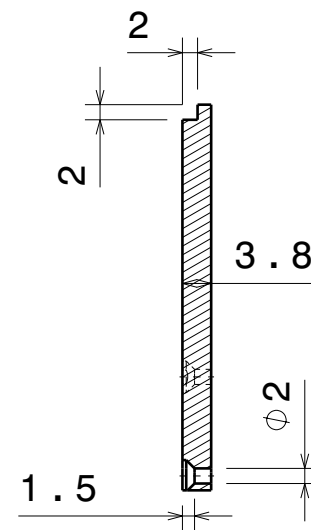
Vue de dessous

Vue de dessus

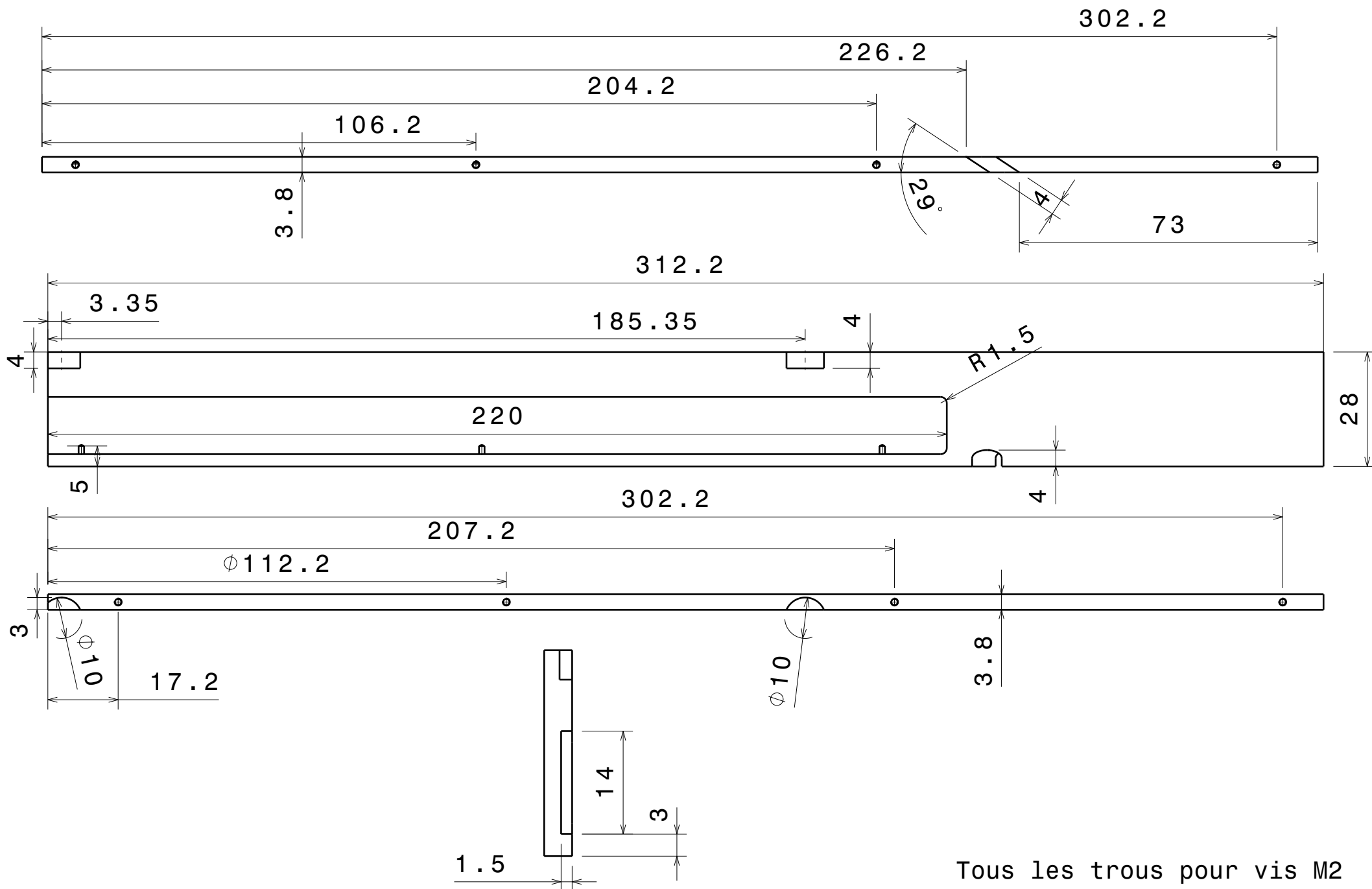


19 Fond avant

Tous les trous pour vis M2

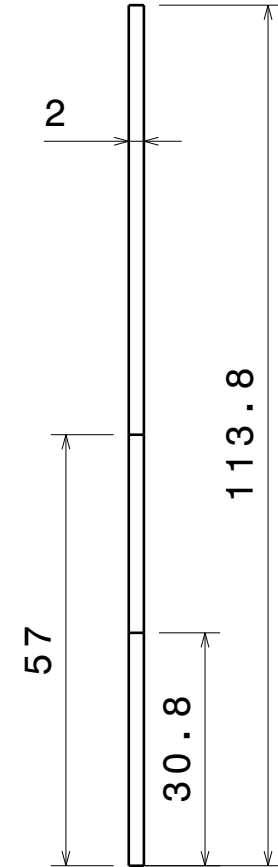
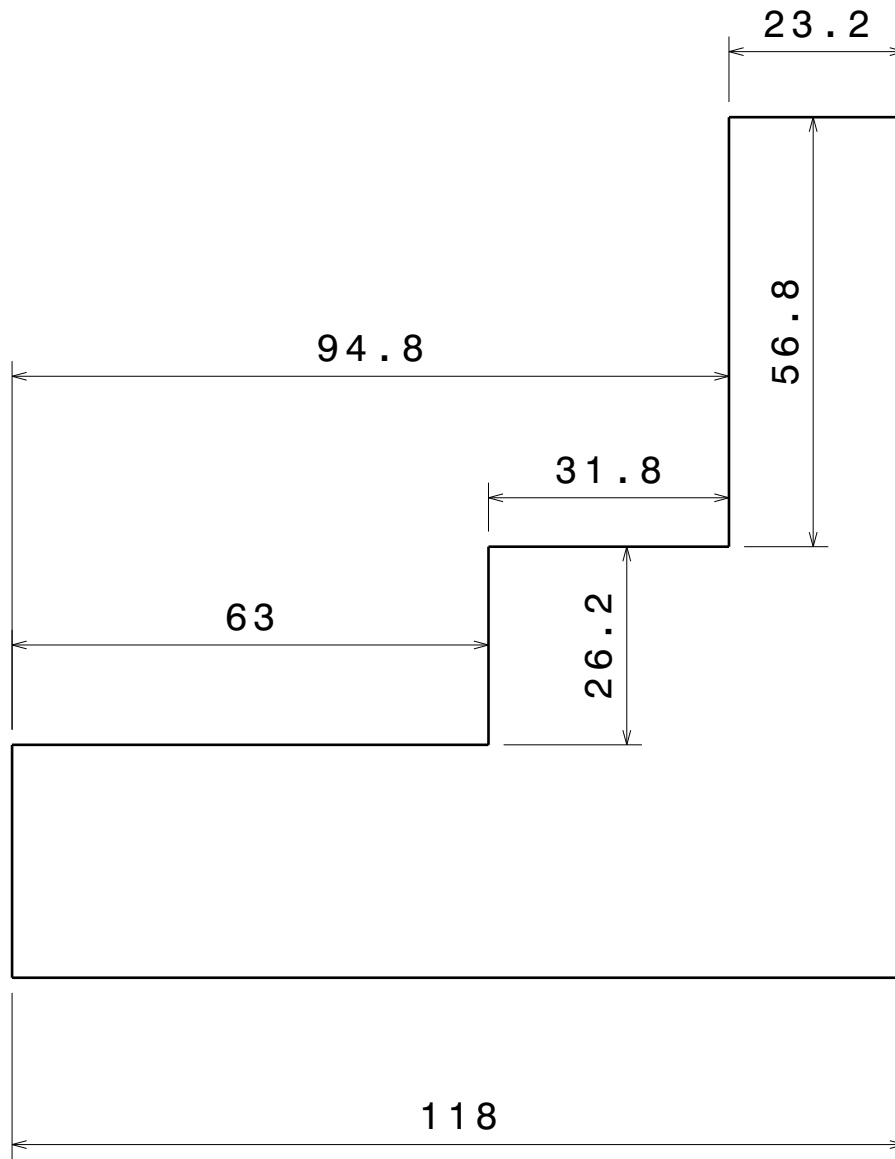


20 Derrière droit



Tous les trous pour vis M2

21 Coté encodeur



22 Dessous encodeur

